

# WOODBRIAR

APARTMENTS

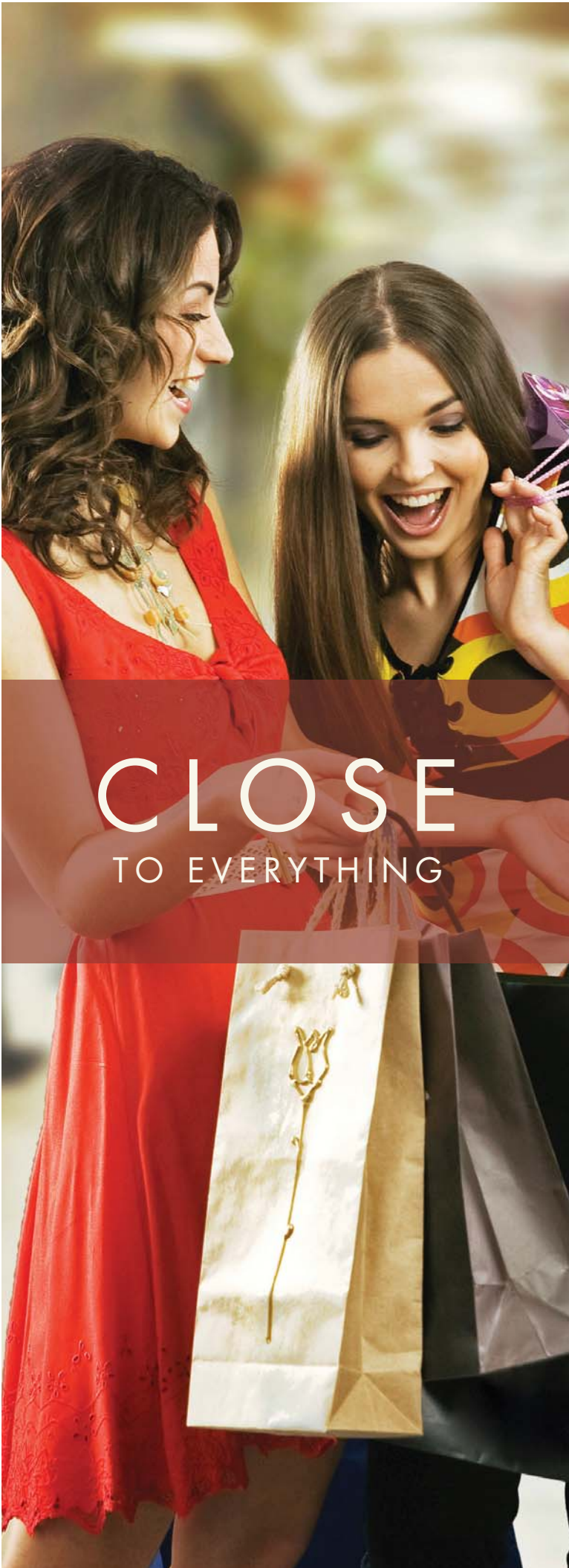
CHESAPEAKE, VIRGINIA



LIVE IN THE PRESENT



BREEDDEN



CLOSE  
TO EVERYTHING



### PARK-LIKE PERFECTION

Enjoy the convenience of living near all of Greenbrier's many amenities and the beauty of Woodbriar's unique architecture. You'll love the solid construction of these one- and two-bedroom apartments, which feature steel doors and energy efficient heat pumps for year-round comfort. An airy clubhouse serves as Woodbriar's gathering place, with a spacious deck for relaxing, an inviting swimming pool and a workout room offering the latest in exercise equipment so you can maintain your fitness program.



### FEATURES

- 1 & 2 Bedroom Apartments
- Washer/Dryer Included
- Private Patio/Balcony
- 24-Hour Emergency Service
- Vaulted Ceilings with Skylights Available
- Pet Friendly
- Storage Closets on Balcony

### AMENITIES

- Verizon FIOS Available
- 24-Hour Fitness Center
- Swimming Pool
- Walking Trails

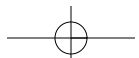




OUR TREASURED COMMUNITY

### RETREAT TO WOODBRIAR

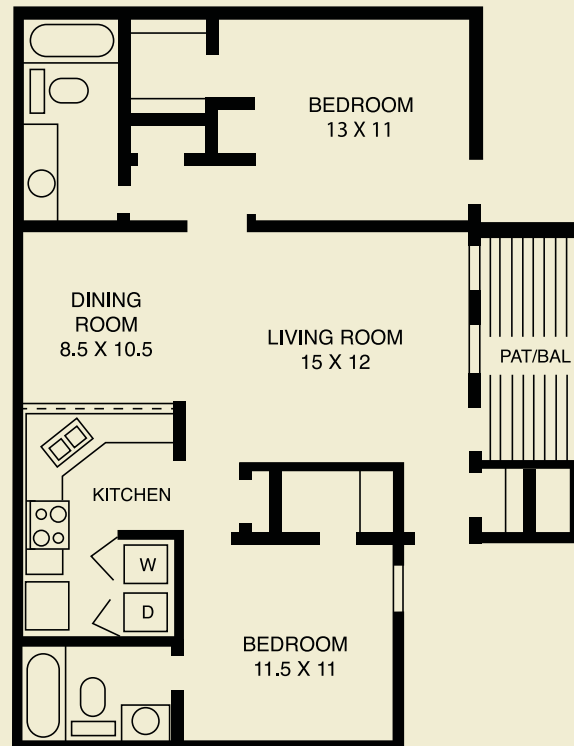
Designed to complement your lifestyle with the conveniences you expect and the extra touches you deserve, your home at Woodbriar invites you to relax and enjoy your comfortable surroundings.



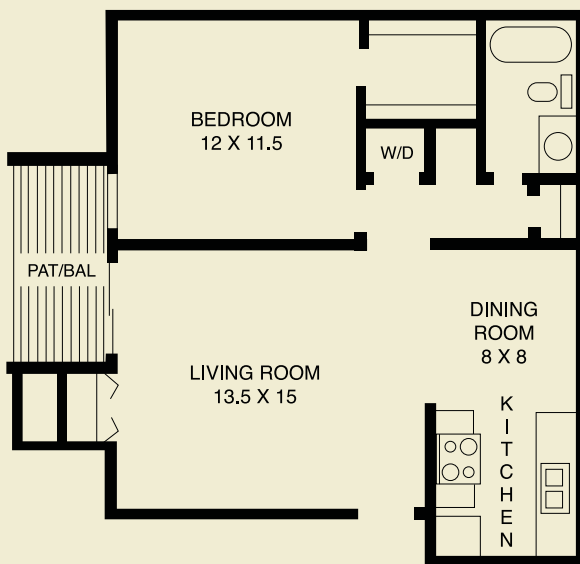
## SPACIOUS LIVING OPTIONS



TWO BEDROOM



ONE BEDROOM



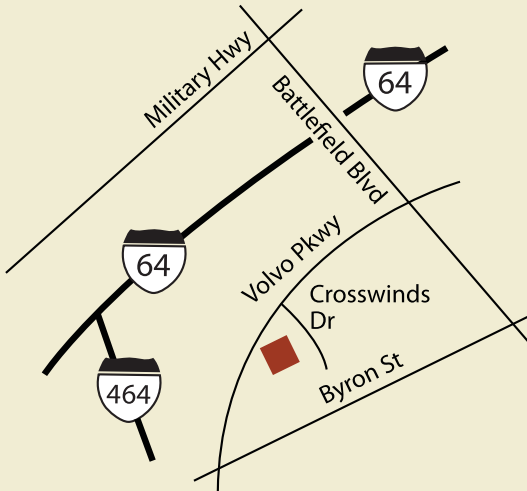
RENT \$ \_\_\_\_\_

Both models also offer a private patio or balcony, washers and dryers with an option of vaulted ceilings.

RENT \$ \_\_\_\_\_

Woodbriar's one- and two-bedroom floor plans offer spacious living arrangements, equipped kitchens, dining and living rooms and complementing bedrooms with full baths, and walk-in closets.





### DIRECTIONS:

- From I-64 take exit 290B for Battlefield Blvd
- Turn right at Volvo Parkway
- Take the first left onto Crosswinds Drive
- Clubhouse on the right

### NEIGHBORHOOD INFO:

- Minutes to Greenbrier Mall and other shopping
- Chesapeake Regional Medical Center
- Close to parks and nature trails

# WOODBRIAR

APARTMENTS

CHESAPEAKE, VIRGINIA



Woodbriar Apartments  
208 Crosswinds Drive  
Chesapeake, VA 23320  
877.233.6488

## INSPIRING PLACES

With more than 40 years of experience in every facet of real estate development and a sterling reputation for excellence, The Breedon Company has long been associated with inspiring places.

[thebreedencompany.com](http://thebreedencompany.com)